

# ZOO fan

**Lowers the cost of heating large (and high) spaces**

- > Improves thermal comfort
- > Air flow angle is easy to change
- > Can be speed controlled
- > Includes the low noise Ziehl-Abegg FE2owlet impellers

The stylish **ZOO** (Zone Of Occupancy) Fan de-stratifies the space to create a more pleasant and comfortable indoor environment for workers and customers. It also helps to lower operating costs by reducing the energy consumption of a heating system in cooler weather.



# Creates a more comfortable and productive environment

During the winter season when heaters are used to add warmth to a space, the heat rises causing thermal stratification and the area near the ceiling to become hot. As a result the building's heaters are used excessively to maintain a comfortable temperature at floor level. This overheating results in significantly more energy being used and often creates hot and cold spots in a building.

The ZOO Fan creates a gentle, concise column of air that brings warm air down to floor level. This can reduce the temperature differential between ceiling and floor to as little as 1°C and create a more productive, more comfortable environment that has the potential to reduce energy consumption.



*Fire Stations*



*Gymnasiums*



**FANTECH**  
Intelligent Ventilation



## A versatile and effective fan

The unique design of the ZOO Fan can be installed so its air flow avoids, or targets particular areas such as workstations and high traffic areas. They are also particularly effective when used in aisles because of their narrow band of air and variable speed control motor that provides air flow adjustment.

The ZOO units can also be used as a safe and unobtrusive cooling fan when positioned closer to the occupant. Its ceiling hung mounting position eliminates the need for dangerous power leads and extension cords at floor level.

The ZOO Fan features a robust UV-treated PC ABS plastic housing that is fire resistant (5VB) and long lasting. It is fitted with an easy to reach IP54 terminal box and comes with Gripple attachments which makes it quick and easy to install.

## Where should a ZOO Fan be installed

The ZOO Fan is ideal for buildings that are heated and have high ceilings. These buildings include warehouses, airports, car dealerships, green houses, gymnasiums and shopping centres.

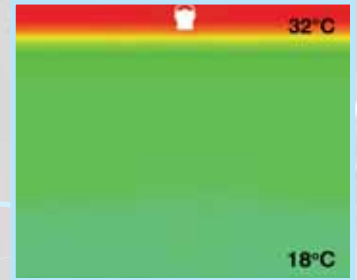
The range is available in 2 sizes, 250mm and 300mm outlets and have been tested to ISO 5801:2007 for air flow performance and BS848 Part 2:1985 for sound performance.



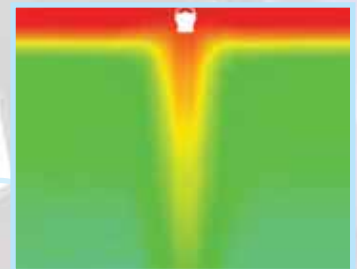
Warehouses

## CFD showing effect of ZOO fan

The thermal image is from a CFD (Computational Fluid Dynamics) computer model of a 12.2 metre x 12.2 metre space with a 7.6 metre flat ceiling deck and a ceiling mounted heat source with a thermostat affixed 1.5 metres above the floor, set at 21°C



The built-up heat at ceiling level is forced down when the ZOO Fan (represented by the white silhouette) is turned on.



De-stratification results in a more even temperature throughout the Zone Of Occupancy. Creature comfort improves noticeably and energy consumption is reduced, often significantly.



# Creates a uniform temperature throughout the space



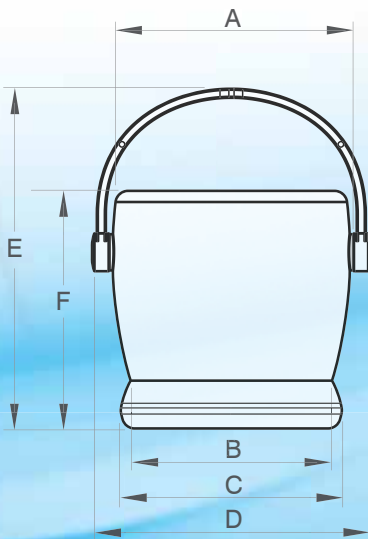
## Performance and Electrical Data

Model Number	Fan size (mm)	Supply	Motor Electrical Data (Amperage)		Input Power (kW)	Fan Speed (rev/min)	Max. Air Flow (m <sup>3</sup> /s)	Max. Operating Temperature (°C)
			Full Load Current	Start Current				
H30	250	230V/1Ph/50Hz	0.24	0.40	0.048	1370	0.265	55
H60	300	230V/1Ph/50Hz	0.41	0.63	0.095	1230	0.532	60

## Sound Data

Model Number		Sound Power Levels dB								Average Sound Level (dBA @ 3m)
		63Hz	125Hz	250Hz	500Hz	1 kHz	2 kHz	4 kHz	8 kHz	
H30	Inlet	52	59	53	53	52	52	49	42	37
	Outlet	51	60	52	52	53	53	48	41	38
H60	Inlet	54	60	60	60	56	59	53	43	43
	Outlet	53	61	62	57	55	58	51	41	42

## Dimensional Data



Model Number	A	B	C	D	E	F	Weight kg
H30	359	300	352	445	545	375	7
H60	452	367	421	533	656	460	9

[www.fantech.com.au](http://www.fantech.com.au)

For sales enquiries contact:



### Fantech Pty. Ltd.

Victoria: (+61 3) 9554 7845  
 New South Wales: (02) 8811 0400  
 South Australia: (08) 8294 0530  
 Northern Territory: (08) 8947 0447  
 Queensland: (07) 3299 9888  
 Western Australia: (08) 9209 4999  
 A.C.T.: (02) 6280 5511  
 New Zealand: (09) 444 6266  
 South East Asia: (+603) 5121 4453

Specifications and design subject to change without notice.