

August 2012

Part No.: INST-GENERAL

# INSTALLATION & MAINTENANCE INSTRUCTIONS

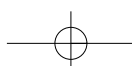
&

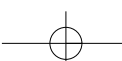
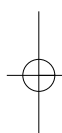
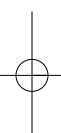
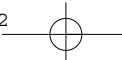
# ELECTRICAL WIRING DIAGRAMS



**FANTECH**  
Intelligent Ventilation

[www.fantech.com.au](http://www.fantech.com.au) - For the most up to date information on Fantech products.







# INSTALLATION & MAINTENANCE

## GENERAL INSTRUCTIONS

---

### OFF-LOADING

During off-loading inspect fans for damage. If the casings, cowls or impellers are damaged, notify your local Fantech distributor immediately.

Fantech cannot be held responsible for any loss or damage incurred to goods during transport, off-loading or on site.

### SITE STORAGE

The fans must be stored in a clean, dry, protected and vibration-free area. The fan impellers should be rotated daily to prevent bearing damage. Failing to follow these instructions may void the warranty.

### MAINTENANCE

Install fans and accessories to allow service access for maintenance and for the replacement of assemblies and component parts, without disturbance of other items of plant and building elements.

Most motors are fitted with sealed-for-life bearings which are maintenance-free. It is recommended that fans be inspected initially at 3-monthly intervals, to clean the blades and motor and to check for tightness of fastenings.

**Where fans are used for kitchen exhaust or other applications where the air contains high amounts of dust, residue and other contaminants, fans should be cleaned and maintained at more frequent intervals appropriate for the application.**

Motor overloads/contactors should also be inspected to ensure correct operation.

Should external lubricators be fitted, please refer to **LUBRICATION INSTRUCTIONS** in the 'Installation and Maintenance' instructions included with each fan.

If the fans are belt driven, check pulley alignment and belt tension before starting the fan. Belt tension must be checked 2 - 4 weeks after start-up.

### MOTORS

All standard motors are suitable for operation in air temperatures between -20°C and +40°C. If higher temperatures are required, contact your local Fantech supplier.

Standard motors are **not** suitable for handling saturated air containing water droplets or for some corrosive fumes. For severe applications, special motors and finishes may be required. Customers are requested to discuss these applications with our sales engineers to ensure a fan suitable for the application is selected.

**WARNING** - Failure to do so could void warranty.

## ELECTRICAL

---

### WIRING WITH VARIABLE SPEED DRIVES

Fans to be connected to Variable Speed Drives (VSD) or equivalent electronically controlled power supply, must be wired according to the VSD wiring instructions. This is to ensure conformance to legislated EMC requirements as well as protection against premature product failure. The wiring will typically require EMC shielded cable between the VSD and motor, terminated so that there is good 360° contact between the sheath and both the EMC motor gland at one end and at the VSD at the other end.

Motors supplied by Fantech are typically not supplied with an EMC gland, and should be purchased at the same time as the supply lead to ensure the grommet fits the cable correctly.

Not all products supplied by Fantech are suitable for VSD drives. Clarification of what products are suitable can be found in our online catalogue at [fantech.com.au](http://fantech.com.au). The list below covers some of the products that are not suitable.

- EC motor products
- Single phase products.
- External rotor motor products require sinusoidal filter

### SUPPLY

Read the fan data label to determine the number of phases and amperage drawn by the unit. Check that the available supply is suitable.

### EARTHING

All fans must be earthed in accordance with AS/NZS3000:2007 and local supply regulations.

# INSTALLATION & MAINTENANCE

## WIRING

Wiring must be in accordance with AS/NZS3000:2007 and local supply regulations. Wiring diagrams are provided with all fans. Wiring diagrams are shown on pages M-6/9.

## PROTECTION

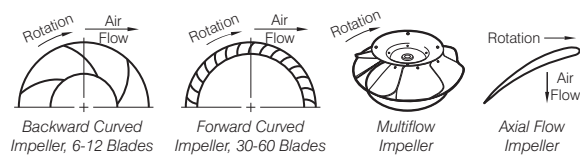
Fuses in the circuit should be regarded as protecting the wiring only against short circuit, they are not suitable for overload protection. Fuses must be able to carry starting loads and these can be taken as a minimum of six times the running current for 25 seconds.

All three-phase motors must be provided with differential action, single-phasing protection and overload current protection. Failure to provide single-phasing protection will void warranty.

Motors fitted with thermistor or thermostatic protection should have these wired into the starting contactors' control circuit to interrupt motor power supply on winding temperature rise.

Wires marked 'TK' are for internal thermal contacts which can be wired directly into the contactor controller circuit. Alternatively, thermal protection devices can be installed into the control circuit therefore negating the need to use the 'TK' contacts. Failure to connect thermal protection devices will void warranty.

## DIRECTION OF ROTATION



The correct rotation and direction of air flow is shown on each individual fan. If backward-curved centrifugal fans rotate in the wrong direction, the motor may overload and the motor warranty will be void.

To change the direction of rotation on three-phase motors, interchange any two supply leads. All single-phase motors will rotate in the correct direction when correctly connected.

## STARTING

All fans are suitable for direct-on-line starting by switch or automatically by contactor up to and including 5.5kW. The number of starts should be limited to no more than four per hour or, in the case of motors of less than 1kW, no more than eight starts per hour. This would be subject to local supply regulations.

### Check List

- check power supply
- check fan is free to rotate
- check overloads are fitted
- ensure ductwork is free of debris
- check rotation of fan
- check the motor amperage draw does not exceed nameplate rating
- check capacitor for deterioration of capacitance regularly.

## SAFETY

**Rotating fan impellers can be a danger to personnel.  
The following precautions must be taken:-**

- electrically isolate the fan motor prior to undertaking any work.
- regularly check impeller fasteners for tightness.
- where fans are accessible to personnel or directly exposed to habitable areas, it is the responsibility of the installers to ensure that fans will have guards which comply with the latest Australian Standard AS4024.1 safeguarding of machinery.
- prior to fan start-up, ensure loose debris will not be sucked into the fan. All ductwork should be clean.

## INSTALLATION INSTRUCTIONS

### Important Notes:

**With all horizontally mounted axial fans it is preferable that the fan is installed with the motor mounted on top of the motor plate. ie. not suspended under the motor plate.**

**For outside installations, IP66 rated conduit and fittings must be used.**

**To obtain rated performance, the following recommendations should be followed:-**

### Duct Mounted Fans - General

- inlet and outlet ductwork should be free from obstructions.
- duct transitions should be a maximum of 60° inlet/15° outlet.
- avoid sharp bends on inlet or outlet.
- do not use ductwork smaller in area than the fan.
- flexible duct connections should be taut.
- ductwork connections should be well aligned.
- inlet cones must be fitted to free inlet applications.
- ensure that the fan orientation is correct for the required air flow direction.

# INSTALLATION & MAINTENANCE

## Belt-Driven Product

- pulleys must be correctly aligned.
- belts must be correctly aligned and tensioned.
- tension must be checked 2-4 weeks after start-up.

## Roof Ventilators

- ensure that upstands are flat and true.
- maximum angle of upstand or curb 30°
- fix a sealing strip of neoprene to the top of the upstand to prevent air leakage.
- fit an electrical compression gland to the roof cowl in an appropriate location and pass the electric cable through as the roof cowl is fitted.
- ensure the electric cable is not pinched prior to securing the cowl to the upstand.
- the roof cowl should be secured with roofing screws through the side skirt midway through the skirt.
- inlet ductwork should be free from obstructions.
- avoid sharp bends at the inlet.
- **vertical discharge axial roof units: ensure the damper flap hinge points down the slope of the roof.**

## LUBRICATION INSTRUCTIONS

Most Fantech products are fitted with sealed-for-life pre-lubricated bearings which do not require maintenance for the life of the fan.

Should your fan be fitted with grease nipples, the following instructions should be followed:-

### RECOMMENDED LUBRICATION INTERVALS

Motor Frame	Working Hours			
	48 rev/sec	24 rev/sec	16 rev/sec	12 rev/sec
160	4000	8000	12000	20000
180-200	3000	7000	12000	16000
225-250	2000	6000	10000	13000
280	1000	5000	8000	13000
315	1000	3500	8000	10000

Maximum interval 12 months.

These times are a guide only and will depend on the motor manufacturer and actual running conditions.

### RECOMMENDED GREASES

Wherever possible the grease used should be identical to the original. When different greases are mixed, even if they are both suitable for the conditions, incompatibility can occur and result in rapid bearing failure.

In the absence of specific instructions supplied with the fan the following greases should be used. STANDARD FANS Shell Alvania R3 or compatible lithium-based grease suitable for 130°C continuous operation. SMOKE SPILL and high temp motors must use the grease stated on the motor to maintain the Smoke Spill approval.

### PROCEDURE

**M**

If the grease lines are not extended to the outside of the case the fan must be electrically isolated for safety before work commences.

Clean the grease nipples with a clean cloth.

Introduce the new grease to all points while the fan is rotating until the old grease is purged from the grease relief port normally located at the bottom of the bearing housing. If it is required to manually rotate the impeller, the fan must be electrically isolated to prevent accidental startup.

### WARNING

INCOMPATIBLE GREASE, EXCESSIVE GREASE OR INCORRECT GREASE RELIEF CAN CAUSE DAMAGE TO THE MOTOR.

# WARRANTY

1. When supplying goods to a consumer, the following mandated statement applies: "Our goods come with guarantees that cannot be excluded under the Australian Consumer Law. You are entitled to a replacement or refund for a major failure and for compensation for any other reasonably foreseeable loss or damage. You are also entitled to have the goods repaired or replaced if the goods fail to be of acceptable quality and the failure does not amount to a major failure."
2. The benefits of this warranty are in addition to any rights and remedies imposed by Australian State and Federal legislation that cannot be excluded. Nothing in this warranty is to be interpreted as excluding, restricting or modifying any State or Federal legislation applicable to the supply of goods and services which cannot be excluded, restricted or modified.
3. Subject to the conditions and limitation below, the Company warrants products of its manufacture to be free of defects in workmanship and/or materials at the time of delivery to the Buyer.
4. Any part, assembly or portion thereof found to be defective within one year from the date of commissioning or eighteen (18) months from date of shipment from our factory, whichever is the sooner, unless expressly stated otherwise in the Company's Publications or Literature, will be repaired or exchanged F.O.B factory.
5. The Company reserves the right to replace defective parts of the goods with parts and components of similar quality, grade and composition where an identical component is not available.
6. Goods presented for repair may be replaced by refurbished goods of the same type rather than being repaired. Refurbished parts may be used to repair the goods.
7. Goods or parts that have been returned for repair (except where the repair is as a result of the Company's failure to comply with the statutory guarantees in the ACL) or warranty assessment are deemed to have been abandoned by the Buyer if not collected within 30 days after the Company has notified the Buyer in writing of the warranty assessment outcome or the completed repair.
8. The Company reserves the right to dispose or otherwise deal with an abandoned product or part at its discretion.
9. This warranty does not apply if:
  - (i) the goods have not been paid for by the Buyer as per the credit terms provided; or
  - (ii) the goods have not been installed in accordance with AS NZS 3000/2000 Australian/New Zealand Wiring rules; or
  - (iii) the goods have been misused or neglected.
10. The Company assumes no responsibility under this warranty for the labour costs involved in the removal of defective parts, installation of new parts or service charges related thereto.
11. If a fault covered by this warranty occurs, the Buyer must first contact the Company at the contact address on page M-10.
12. Any warranty claim must be accompanied by:
  - (i) proof of purchase;
  - (ii) written details of the alleged defect; and
  - (iii) appropriate documentation (such as installation and maintenance records etc).
13. The Company shall have the option of requiring the return of the defective part (transportation prepaid by the Buyer) to establish the claim.
14. The Company makes no warranties or representations other than set out in this clause 7.
15. The repair or exchange of the goods or part of the goods, is the absolute limit of the Company's liability under this express warranty.

# WIRING DIAGRAMS - STANDARD MOTORS

These diagrams apply to **STANDARD FRAME INDUCTION MOTORS** which are used in the following products:-

		Pgs**
• AD/E..D/V	Alpha/Beta Series Diags. DD 4, 5, 6, 9	D-4/6
• AD/E..S	Alpha Series Supply Diags. DD 4, 5, 6, 9	D-34/35
• *AL..	Centrifugal fans Diags. DD 1, 2, 3	E-14/19
• *AP/APV..	Axial Flow fans Diags. DD 1, 2, 3, 8, 9	B-29/31
• *APB..	Belt-driven axial fans Diags. DD 1, 2, 3, 7	B-29/31
• *APS..	Belt-driven axial fans Diags. DD 1, 2, 3, 7, 8	B-29/31
• BFA..	Bifurcated fans Diags. DD 1, 2, 3, 7, 8	B-29/31
• CGD/E..	GE Series Diags. DD 1, 2, 3, 7, 8	D-46/47
• *CHD/E..	Heritage Series Diags. DD 1, 2, 3, 7, 8	D-18/19
• *CHS..	Heritage Smoke-Spill Diags. DD 1, 2, 3	D-48/49
• CPD/E..	Compact 2000 Diags. DD 1, 4, 5, 6, 9	A-12/14
• *FAD..	FA Series Diags. DD 1, 2, 3, 7	D-20/25
• *FL..BD	FlexLine Series Diags. DD 1, 2, 3, 7	E-3, E-7/11
• *FL..DD	FlexLine Series Diags. DD 1, 2, 3, 7	E-3/6
• *HC..	High Capacity Series Diags. DD 1, 2, 3, 7, 8	D-26/27
• JV..	JetVent Axial Diags. DD 1, 3	F-12/13
• All other JetVents		See page M-9
• *L..	Centrifugal fans Diags. DD 1, 2, 3	E-14/19
• *MMD/E..	Multiflow Series Diags. DD 1, 2, 3, 6, 8	B-20/24
• *PC..DD	PowerLine Series Diags. DD 1, 2, 3, 8, 9	B-16/18
• *RDE..	New Generation Series Diags. DD 1, 2, 3, 8	D-10/13
• *RDLE..	Alpha/Beta Industrial Diags. DD 1, 2, 3, 8	D-7/9
• *RDS..	New Generation Series Diags. DD 1, 2, 3, 8	D-10/13
• RSS..	New Generation Series Diags. DD 1, 2, 3	D-10/13
• *RVE..	New Generation Series Diags. DD 1, 2, 3, 8	D-10/13
• *RVLE..	Alpha/Beta Industrial Diags. DD 1, 2, 3, 8	D-7/9
• SCD/E..	Short Cased Series Diags. DD 4, 5, 6, 9	B-14/15
• *SQ..	SQ Series Diags. DD 1, 2, 3, 8	A-15/17
• SS..	Smoke-Spill Series Diags. DD 1, 2, 3	D-26/27

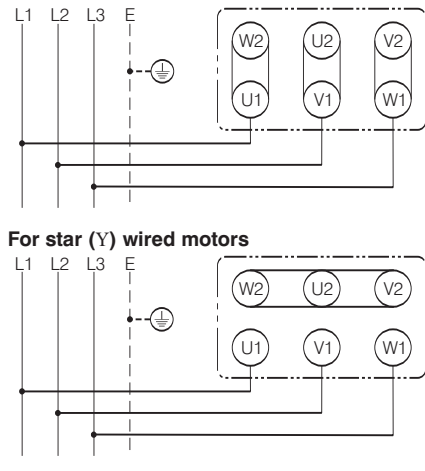
## 3Ø WIRING DIAGRAMS

### Diagram DD1

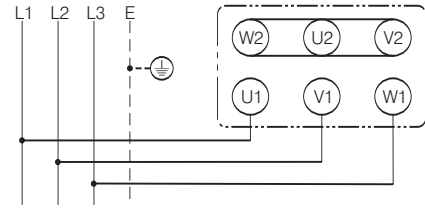
#### SINGLE SPEED MOTORS

refer to the name plate data for correct connection

##### For delta (Δ) wired motors



##### For star (Y) wired motors

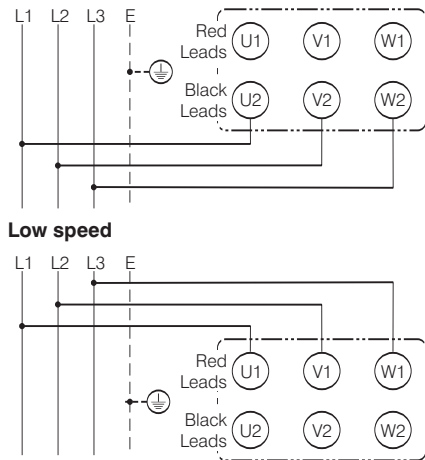


### Diagram DD2

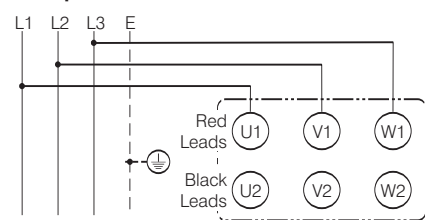
#### TWO-SPEED MOTORS

with 2 separate windings (dual winding)

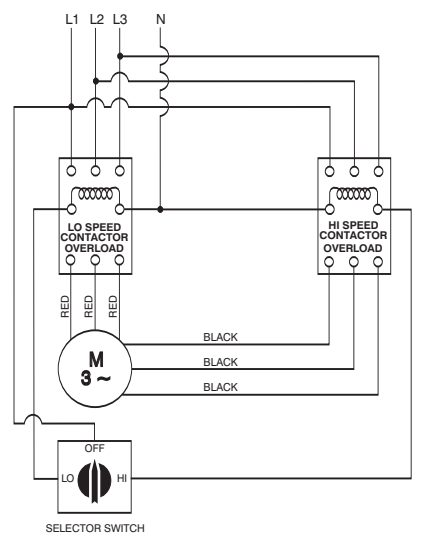
##### High speed



##### Low speed



##### Suggested wiring arrangement



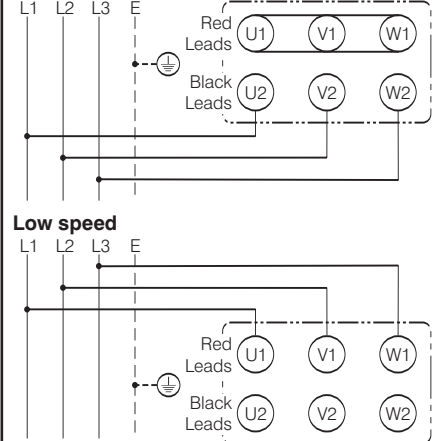
## 3Ø WIRING DIAGRAMS

### Diagram DD3

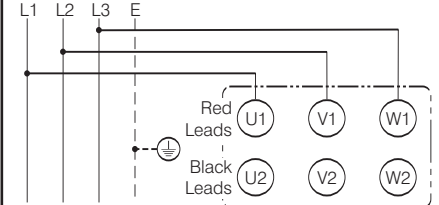
#### TWO-SPEED MOTORS

in Dahlander connection (tapped winding)

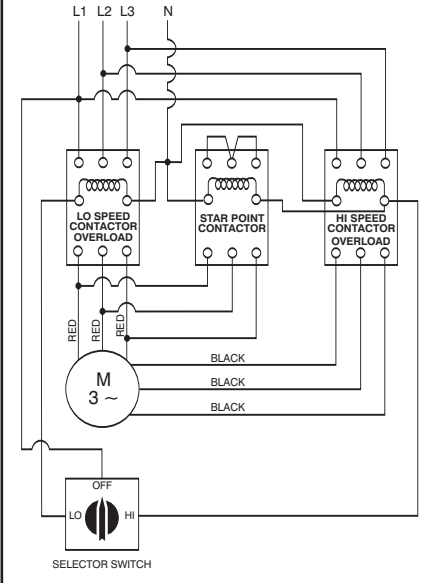
##### High speed



##### Low speed



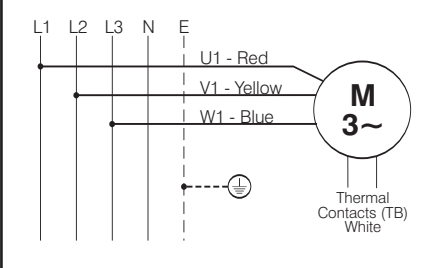
##### Suggested wiring arrangement



### Diagram DD4

#### Single speed only

Codes: ..31. and ..35.



\*\*Reference to Fans by Fantech 2008 catalogue.

**\*NOTE:** Refer to the motor manufacturer's data on the motor for wiring diagrams on standard frame Ex e, Ex d etc. motors.

These diagrams are current at the time of publication, check the wiring diagram supplied with the motor.



# WIRING DIAGRAMS - STANDARD MOTORS

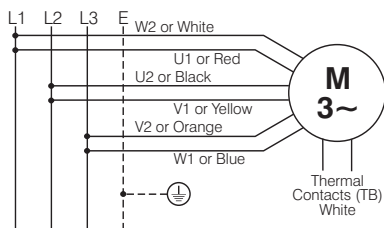
## 3Ø WIRING DIAGRAMS

### Diagram DD5

#### TWO-SPEED MOTORS

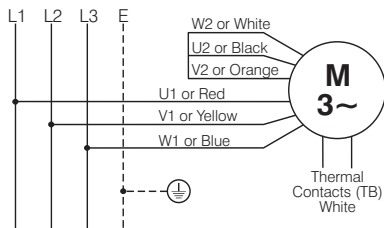
#### High speed delta ( $\Delta$ ) connection

Codes: ..40. to 63.



#### Low speed star (Y) connection

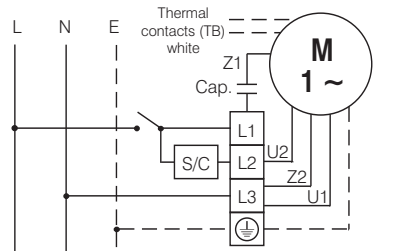
Codes: ..40. and upwards



## 1Ø WIRING DIAGRAMS

### Diagram DD6

#### Anti-Clockwise



Z1 - Blue (AUX)      Z2 - Yellow } (COM)  
U2 - Black (MAIN)    U1 - Red }

Bridge L1 and L2 if speed controller (S/C) is not required

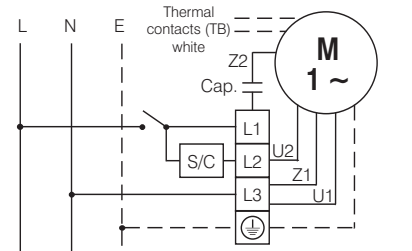
#### Note:

This diagram suits the VA2.0 and VA2.8 controls only. When using the AVA5.0, VA5.0 and VA8.0, use the AUX, MAIN and COM connections.

## 1Ø WIRING DIAGRAMS

### Diagram DD9

#### Clockwise



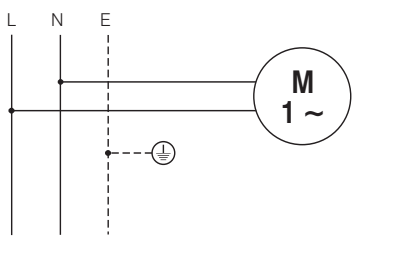
Z2 - Yellow (AUX)      Z1 - Blue } (COM)  
U2 - Black (MAIN)    U1 - Red }

Bridge L1 and L2 if speed controller (S/C) is not required

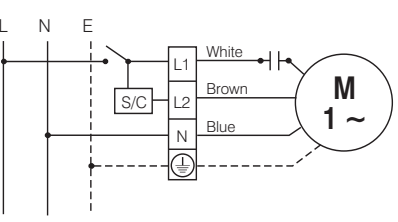
#### Note:

This diagram suits the VA2.0 and VA2.8 controls only. When using the AVA5.0, VA5.0 and VA8.0, use the AUX, MAIN and COM connections.

### Diagram DD7



### Diagram DD8



Bridge L1 and L2 if speed controller (S/C) is not required

For all other SINGLE-PHASE wiring diagrams refer to the manufacturers data on the motor.

These diagrams are current at the time of publication, check the wiring diagram supplied with the motor.

# WIRING DIAGRAMS - EXTERNAL ROTOR MOTORS

These diagrams mainly apply to **EXTERNAL ROTOR MOTORS** but some standard frame induction motor diagrams have been included for ease of presentation.

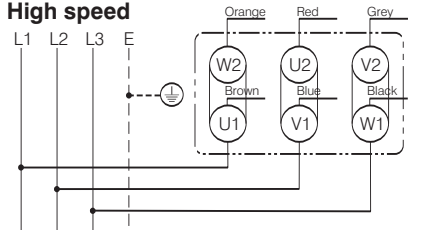
		Pgs**
• CD/E..D/V	Gamma Series	D-14/17
	Diags. ER 1, 2, 4, 5	
• CD/E..VGL	GL Gamma Series	D-43/45
	Diags. ER 1, 2, 4, 5	D-57/59
• CD/E..S	Gamma Supply Series	D-36/37
	Diags. ER 1, 2, 4, 5	
• CF..	Compact axial fans	B-3
	Single-phase motors	Diag. ER 6
• EDM..	EDM Series	A-2
	Diags. ER 6, 7	
• EN..	EN Series	A-3
	Diag. ER 6	
• FL..ER	FlexLine Series	E-3/6
	Diags. ER 1, 2, 4, 5	
• FP..	Compact F/Proof Series	F-3/7
	Diag. ER 6	
• FSU..	Filtered Supply Unit	A-25
	Series 1; AC motors	Diag. ER 4
• FSU146		See M-9
• GRE..	Sigma Series	E-2
	Diag. ER 4	
• HB..	Header Box	A-24
	Diag. ER 4	
• HCM...	HCM Series	A-6
	Diag. ER 4	
• HV..	Stylvent Series	A-8/9
	Diags. ER 6, 8	
• HXM..	HXM Series	A-11
	Diag. ER 6	
• MT..	Minitube Series	B-12/13
	Diags. ER 4, 6	
• MV..	Minivent Series	D-2/3
	Diags. ER 4, 6	D-34/35
• PC..ER	PowerLine Series	B-16/18
	Diags. ER 1, 2, 3, 4, 5	
• PF..	Profile Fan Series	D-28/29
	Diag. ER 4	
• RP..	Ring Plate Series	A-4/5
	Diag. ER 4	
• TILD/E..	Twin Neta Series	B-26/27
	Diags. ER 1, 2, 4, 5	
• VM..	VentMajor Series	B-4/5
	Diag. ER 6	
• VRP..	Ring Plate Series	A-4/5
	Diag. ER 4	
• WCD/E..	Delta Series	A-22/23
	Diags. ER 1, 2, 4, 5	
• TWCD/E..	Delta Series, Twin fan	A-22/23
	Diags. ER 1, 2, 4, 5	

## 3Ø WIRING DIAGRAMS

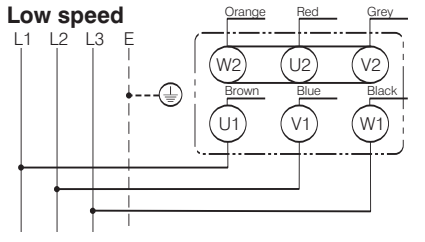
### Diagram ER1

#### TWO-SPEED MOTORS

##### High speed



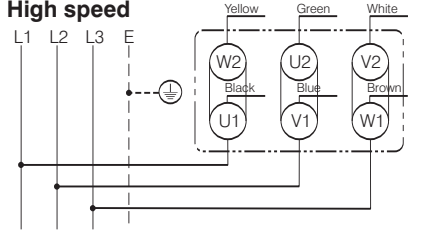
##### Low speed



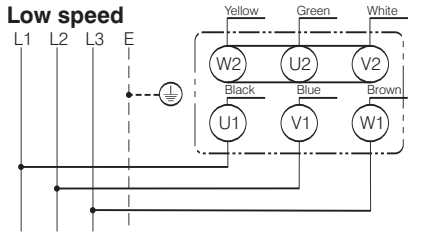
### Diagram ER2

#### TWO-SPEED MOTORS

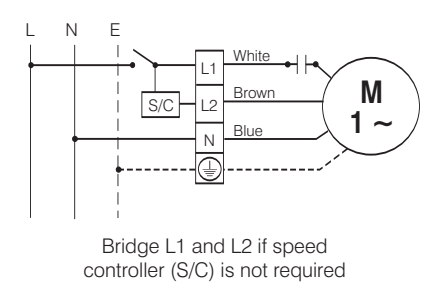
##### High speed



##### Low speed



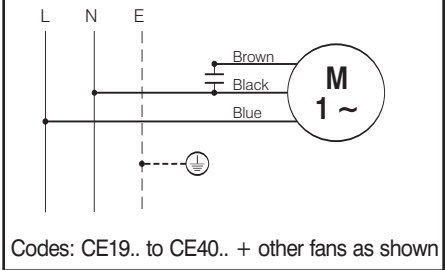
### Diagram ER3



## 1Ø WIRING DIAGRAMS

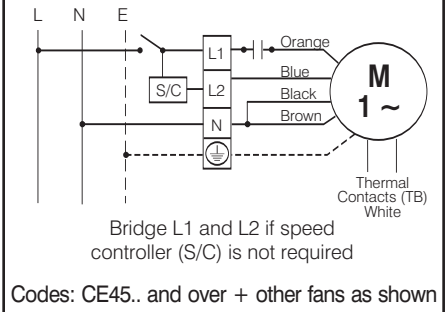
### Diagram ER4

#### 3 active wires plus auto-reset thermal contacts



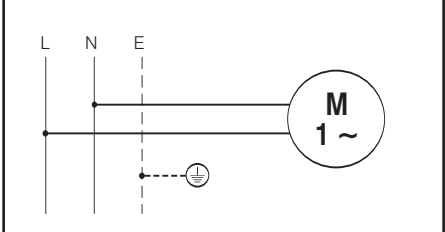
### Diagram ER5

#### 4 active wires plus manual-reset thermal contacts



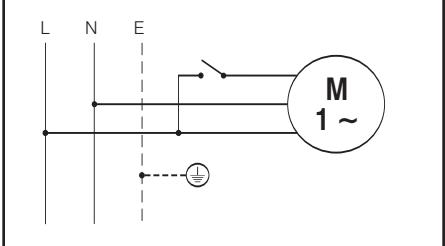
### Diagram ER6

#### Codes: EDM..S & ..C; HV-150AE; MT132; MV112 & MV132



### Diagram ER7

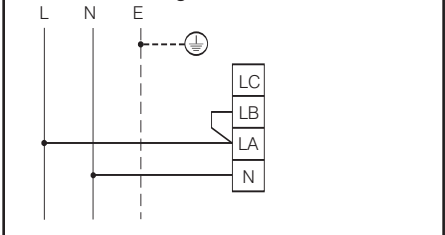
#### Codes: EDM..CT & ..CR



### Diagram ER8

#### Codes: HV-230AE & HV-300AE

Exhaust air mode. For supply air mode bridge LC & LA



\*\*Reference to Fans by Fantech 2008 catalogue.

These diagrams are current at the time of publication, check the wiring diagram supplied with the motor.

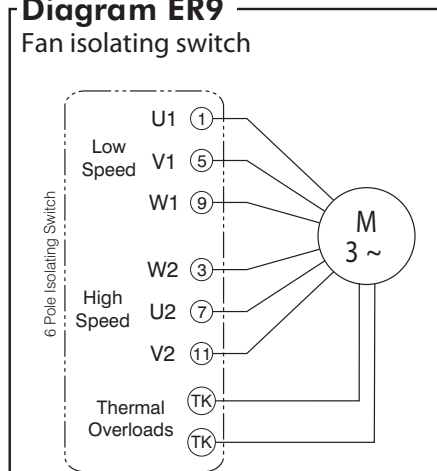
# WIRING DIAGRAMS - ER & INTELLIGENT MOTORS

These diagrams apply to **EXTERNAL ROTOR MOTORS** that are fitted to the following products:-

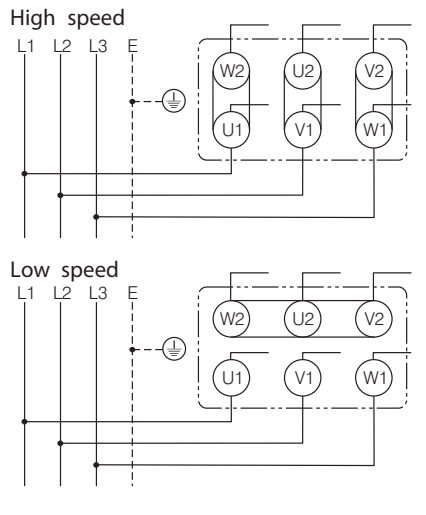
		Pgs**
• EIE..	Ezifit In-Wall Diag. ER 11	A-18/19
• FSU146	Filtered Supply Units Series 3 Diag. ER 12	A-26
• Other FSU units		See page M-8
• JISU..	JetVent Centrifugal Diag. ER 1 (High Speed)	F-15
• JIU..	JetVent Multiflow Diag. ER 9	F-14
• JV..	JetVent Axial	See page M-6
• JWV..	JetVent Warehouse Diag. ER 9	G-5
• TD..	Mixvent Series Diag. ER 10	B-6/9
• WJ..	WhisperJet Fan Kit Diag. ER 10	B-32/33

## 3Ø WIRING DIAGRAMS

**Diagram ER9**  
Fan isolating switch



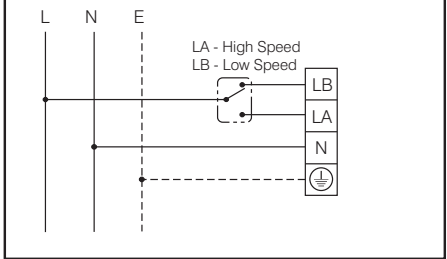
### High or low speed operation only



## 1Ø WIRING DIAGRAMS

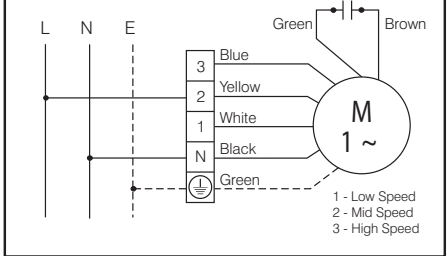
**Diagram ER10**

Codes: All Mixvent units



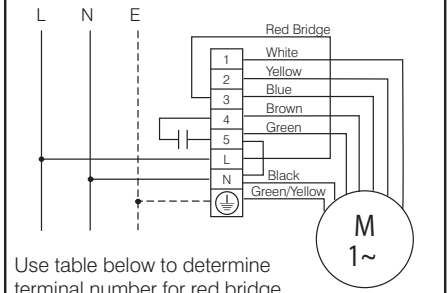
**Diagram ER11**

Codes: EIE150



**Diagram ER12**

Codes: FSU146-4-A1



Use table below to determine terminal number for red bridge

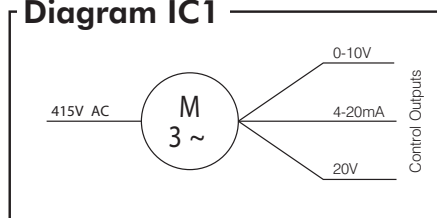
Air Flow, L/sec	109	166	199
Speed	Low	Med	High
Terminal	1	2	3

These diagrams apply to **INTELLIGENT CONTROL MOTORS** that are fitted to the following products:-

		Pgs**
• CD/EEC..	Gamma EC Diags. IC1, 2	D-50/51
• CD/EEC..VGLGL	Gamma EC Diags. IC1, 2	D-52/53
• PCD/EEC	PowerLine EC Diags. IC1, 2	B-34/35

## 3Ø WIRING DIAGRAMS

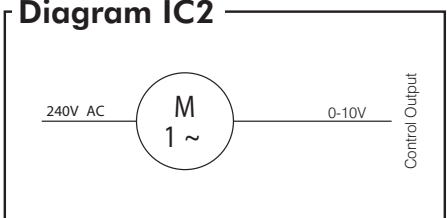
**Diagram IC1**



\*\*Reference to Fans by Fantech 2008 catalogue.

## 1Ø WIRING DIAGRAMS

**Diagram IC2**



These diagrams are current at the time of publication, check the wiring diagram supplied with the motor.

# - IMPORTANT -

## INSTALLATION & MAINTENANCE INSTRUCTIONS

## &

## ELECTRICAL WIRING DIAGRAMS

### HEAD OFFICE AND EXPORT ENQUIRIES

Fantech Pty. Ltd.  
42 - 62 Pound Road West, Dandenong South  
Victoria 3175  
Tel: +61 (03) 9554 7845 Fax: +61 (03) 9554 7833  
Email: info@fantech.com.au

### BRANCH OFFICES AND DISTRIBUTORS

#### Victoria

Ideal Rayson - Border Region  
Tel: (02) 6025 1866 Fax: (02) 6025 6766

#### New South Wales

Fantech Pty. Ltd.  
Tel: (02) 8811 0400 Fax: (02) 9831 3676  
Email: ftnsw@fantech.com.au

Uniair Distributors Pty. Ltd. - Newcastle  
Tel: (02) 4961 6088 Fax: (02) 4961 5066  
Email: sales@uniair.com.au

Refrigeration and Air Supplies Pty. Ltd.  
(South Coast) - Wollongong  
Tel: (02) 4226 5133 Fax: (02) 4226 5383  
Email: sales@refrigair.com.au

Airovent Pty. Ltd. - Mortdale (South Sydney)  
Tel: (02) 9153 6005 Fax: (02) 9153 6005  
Email: airoven@bigpond.net.au

#### A.C.T.

Ideal Rayson  
Tel: (02) 6280 5511 Fax: (02) 6280 6953  
Email: info@idealarayson.com.au

#### South Australia

Fantech Pty. Ltd.  
Tel: (08) 8294 0530 Fax: (08) 8294 0541  
Email: ftsa@fantech.com.au

#### Queensland

Air Design Pty. Ltd. - Brisbane  
Tel: (07) 3299 9888 Fax: (07) 3299 9800  
Email: info@airdesign.com.au

Capricorn Air Conditioning Pty. Ltd. - Townsville  
Tel: (07) 4775 5222 Fax: (07) 4775 5305  
Email: sam1@capaircon.com.au

#### Northern Territory

Fantech Pty. Ltd.  
Tel: (08) 8947 0447 Fax: (08) 8984 4299  
Email: ftnt@fantech.com.au

#### Western Australia

Systemaire Pty. Ltd.  
Tel: (08) 9209 4999 Fax: (08) 9209 4900  
Email: sysaire@systemaire.com.au

#### Tasmania

Major Air Pty. Ltd.  
Tel: (03) 6344 6888 Fax: (03) 6344 6555  
Email: majorair@bigpond.net.au

#### NEW ZEALAND

Auckland  
Fantech (NZ) Ltd. - NZ Head Office  
Tel: +64 (09) 444 6266 Fax: +64 (09) 444 6200  
Email: info@fantech.co.nz

#### Christchurch

Fantech (NZ) Ltd.  
Tel: (03) 379 8622 Fax: (03) 379 8623  
Email: info@fantech.co.nz

#### Wellington

Fantech (NZ) Ltd.  
Tel: (04) 566 0532 Fax: (04) 566 0534  
Email: info@fantech.co.nz

### ASIA REGIONAL OFFICE

#### Malaysia

Eltafantech Asia Sdn. Bhd.  
Selangor, Malaysia  
Tel: +60 (3) 7846 0340 Fax: +60 (3) 7842 1132

### ASIA DISTRIBUTORS

#### Hong Kong

Anway Engineering Co. Ltd.  
Tel: +852 2598 4228 Fax: +852 2802 7494

#### Indonesia

P.T. Multitek Indopanca  
Tel: +62 (021) 5366 1985 Fax: +62 (021) 5366 1986

#### Vietnam

Double Win Engineering & Trading Enterprise  
Tel: +84(8) 862 7870 Fax: +84(8) 865 3943

#### Thailand

Thai Air Movement & Control Co. Ltd.  
Tel: +66(2) 316 3428 Fax: +66(2) 316 8235

#### Singapore

Feugo Engineering Pte. Ltd.  
Tel: +65 6728 8083 Fax: +65 6728 8084

#### Sri Lanka

Airflow Solutions (Pvt) Ltd  
Tel: +94 (11) 2 562 764 Fax: +94 (11) 2 562 768

#### India

Suburban Airovient Engg  
Tel: +91 (33) 3292 3946 Fax: +91 (33) 2465 8085

#### Bangladesh

Flat 2B, House 21/1, Eskaton Carden Road,  
Ramna, Dhaka, Bangladesh.  
Tel: +880 (2)833 1155  
Fax: +880 (2)833 2842